

BULLETIN

ISSUE

11

DIARY DATES

SEPTEMBER 20 – 23, 2017
100% DESIGN

SEPTEMBER 21 – 24, 2017
DESIGN JUNCTION

SEPTEMBER 3 – 9, 2017
SPOGA, COLOGNE

SEPTEMBER 18 – 20, 2017
THE HOTEL SHOW, DUBAI

OCTOBER 5 – 6, 2017
ICFF, MIAMI

SEPTEMBER 28 – OCTOBER 1, 2017
IDS 2017, CANADA



WELCOME

TO EDITION ELEVEN!

UHS have now pushed the boundaries with its digital platform 'YouDesign' that includes a comprehensive configurator tool for designers and clients to design their own pieces of furniture choosing from over 400 fabrics, over 20 wood finishes and a range of RAL colours. We are currently offering trade clients to register and log in where you download CAD files, get prices and even buy online!

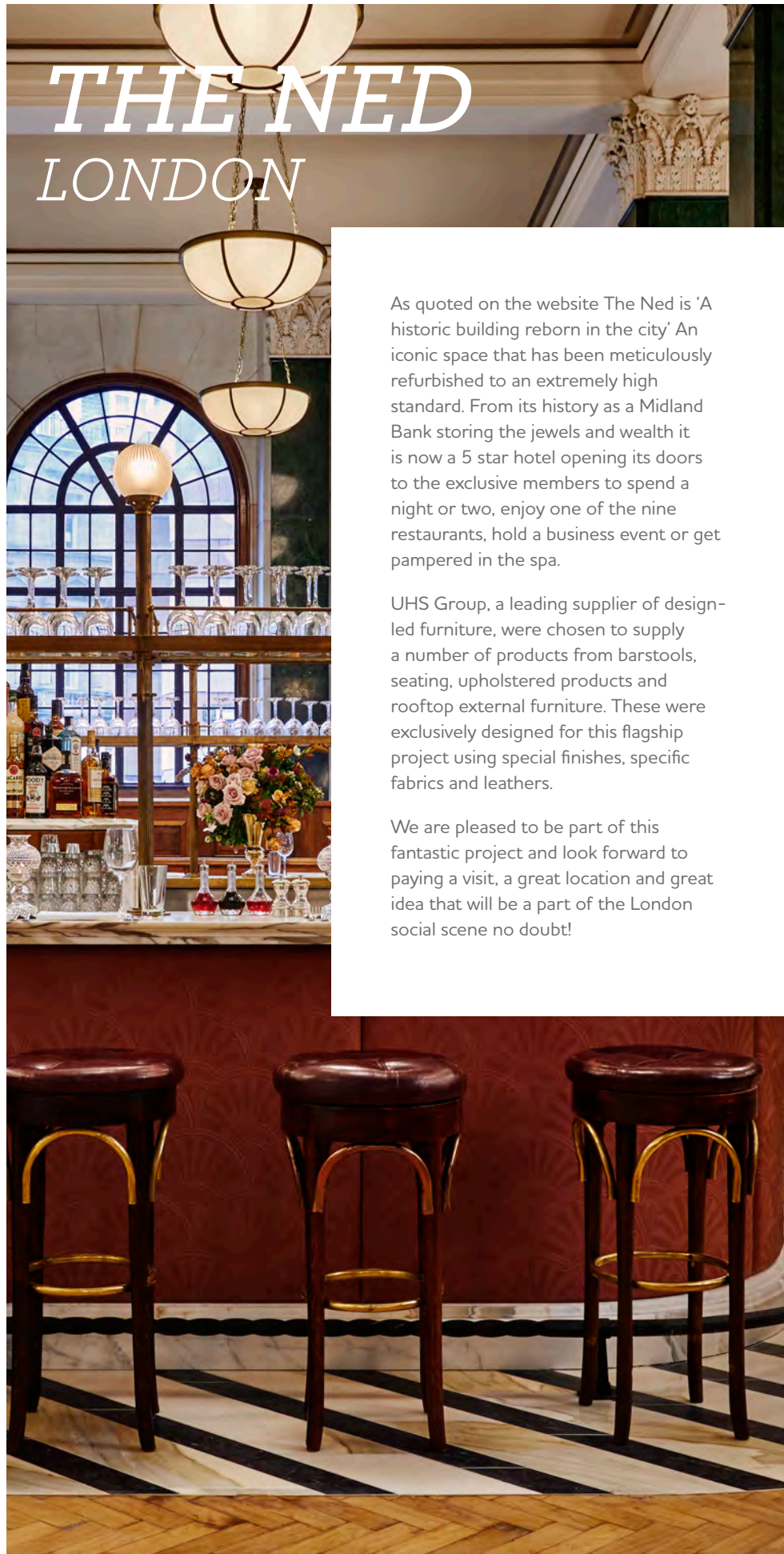
Another move forward is the incorporation of our USA office and as a team we have been spending some time in the New York and Chicago areas doing research and networking. A busy time ahead as the teams evolve!

Along with all this the way is opening up more and more through Europe as we complete a number of key projects in France, Spain, Germany and Italy.

If you would like to find out about a specific project or product, please email us at info@uhs-group.com or contact our team on 0330 1222 400.



DAN GILLMORE
EDITOR



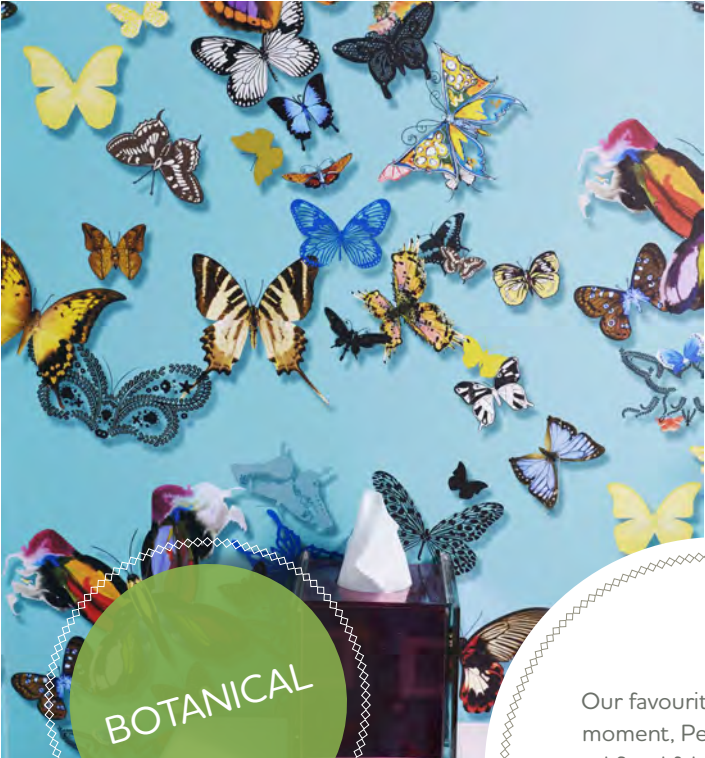
As quoted on the website The Ned is 'A historic building reborn in the city' An iconic space that has been meticulously refurbished to an extremely high standard. From its history as a Midland Bank storing the jewels and wealth it is now a 5 star hotel opening its doors to the exclusive members to spend a night or two, enjoy one of the nine restaurants, hold a business event or get pampered in the spa.

UHS Group, a leading supplier of design-led furniture, were chosen to supply a number of products from barstools, seating, upholstered products and rooftop external furniture. These were exclusively designed for this flagship project using special finishes, specific fabrics and leathers.

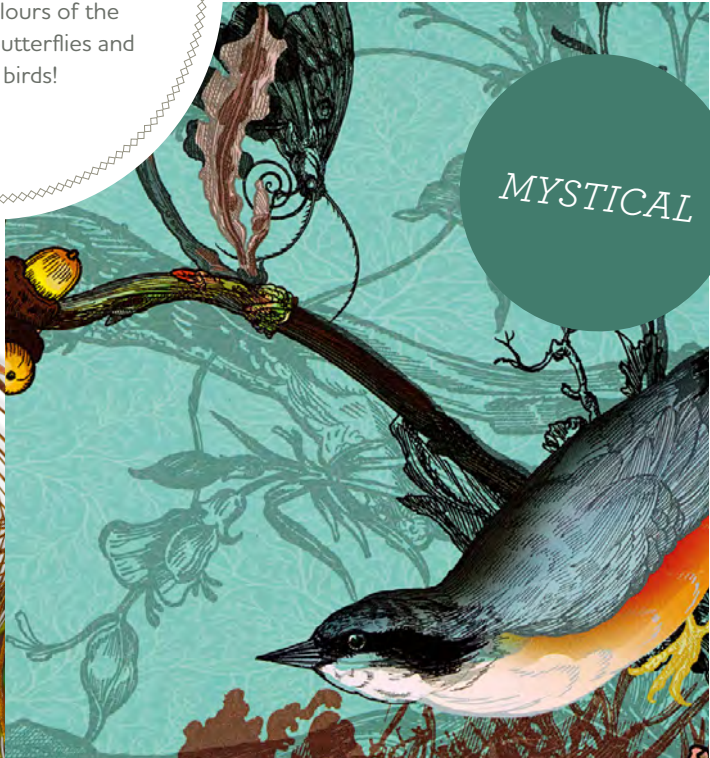
We are pleased to be part of this fantastic project and look forward to paying a visit, a great location and great idea that will be a part of the London social scene no doubt!

TRENDS

FLORAL



Our favourite trends at the moment, Peacock feathers and floral fabrics, lush greens with happy colours of the moment. Add butterflies and tropical birds!



CAULIER, ROMA,

BRASSERIE 28

DREAM

SIDE CHAIR

Contemporary and
Mediterranean styled
wireframe chair.



UHS Group supplied both the outdoor and indoor furniture for this fantastic restaurant located in Via Flaminia 525, Rome (Ponte Milvio area). We were privileged to work with Interior Architect Alexandra Coppieters on this project.

WHO IS NEW?

SPOTLIGHT ON NEW TEAM MEMBERS – EMILIANO SERRA, GEORGE ABBEY



EMILIANO SERRA

WHAT DO YOU DO AT UHS?

I'm regional marketing manager, currently focused on Italian marketplace. Mostly, I'm busy in digital marketing.

WHAT CAN YOU TELL US ABOUT YOUR LIFE OUTSIDE OF THE WORK?

Since the only natural talent I have (if any) is writing, I am editor in chief for the Italian edition of a non-profit international news-website named The Epoch Times. We publish lots of articles about China (main topics we write about are human rights and business).

WHAT IS YOUR FAVOURITE FOOD?

If I must pick one... Lasagne!



GEORGE ABBEY

WHAT DO YOU DO AT UHS?

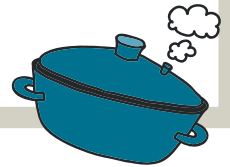
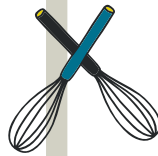
Sales support role, working with the key account managers

WHAT CAN YOU TELL US ABOUT YOUR LIFE OUTSIDE OF THE WORK?

I like to cook and bake. And I also like to eat a lot. As far as hobbies go, they work very well together.

WHAT IS YOUR FAVOURITE FOOD?

Carbonara – pasta, bacon, and cheese.
What's not to love?



The Idea

To use latest technology to visually make it easy for designers to customise and specify furniture for spaces!



VIRTUAL
DIVERSE CUSTOMISE
CONFIGURE DIGITAL

MSC MERAVIGLIA CRUISE SHIP



315 METERS
LONG

5500
PASSENGERS

Recently we installed furniture on the MSC Meraviglia cruise ship whilst it was in dock at The Port of Saint Nazaire in the South of France. An amazing ship 315m long, it has 2500 crew and takes 5500 passengers! You get the feeling of its grandeur whilst inside with it's 19 deck levels, a top deck Aquapark and obviously a number of restaurants. Our team stayed overnight on the boat during the installation with Daniele overseeing the project. We look forward to working on many more cruise liners.



TRAVEL



BULGARIA / NEW YORK / PHILADELPHIA / CHICAGO / INDIANAPOLIS / ROME



ROME

TEAMWORK

NEW YORK / PHILADELPHIA

PRODUCT DEVELOPMENT



RESEARCH



BULGARIA (SOFIA)

CHICAGO / INDIANAPOLIS

NETWORKING

